

Unmatched Functionality for CSP

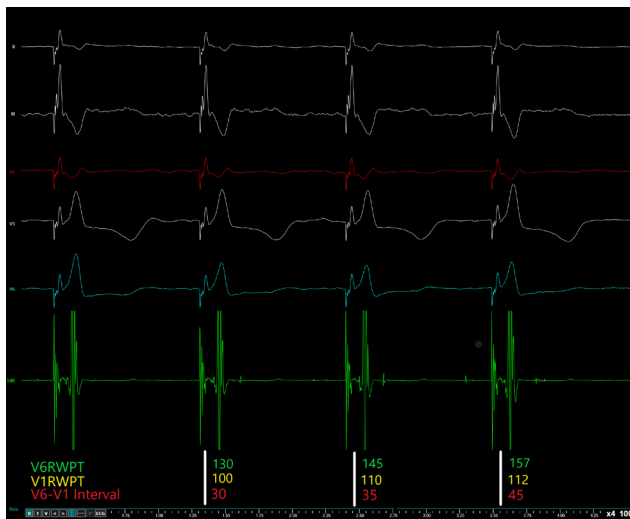


LVAT and **V1-V6 interval** are common discriminators when assessing the conductivity during a Conduction System Pacing implantation.

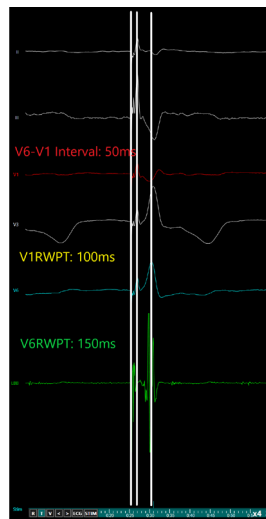
The new EP-TRACER software release allows you to seamlessly evaluate this in **real time** or on a **triggered view**.



EP-TRACER
for CSP Procedures



**Real time
assessment**



**Triggered
view**



Smart Keyboard

Note: The images shown are for illustration purposes only and may not be an exact representation of the product